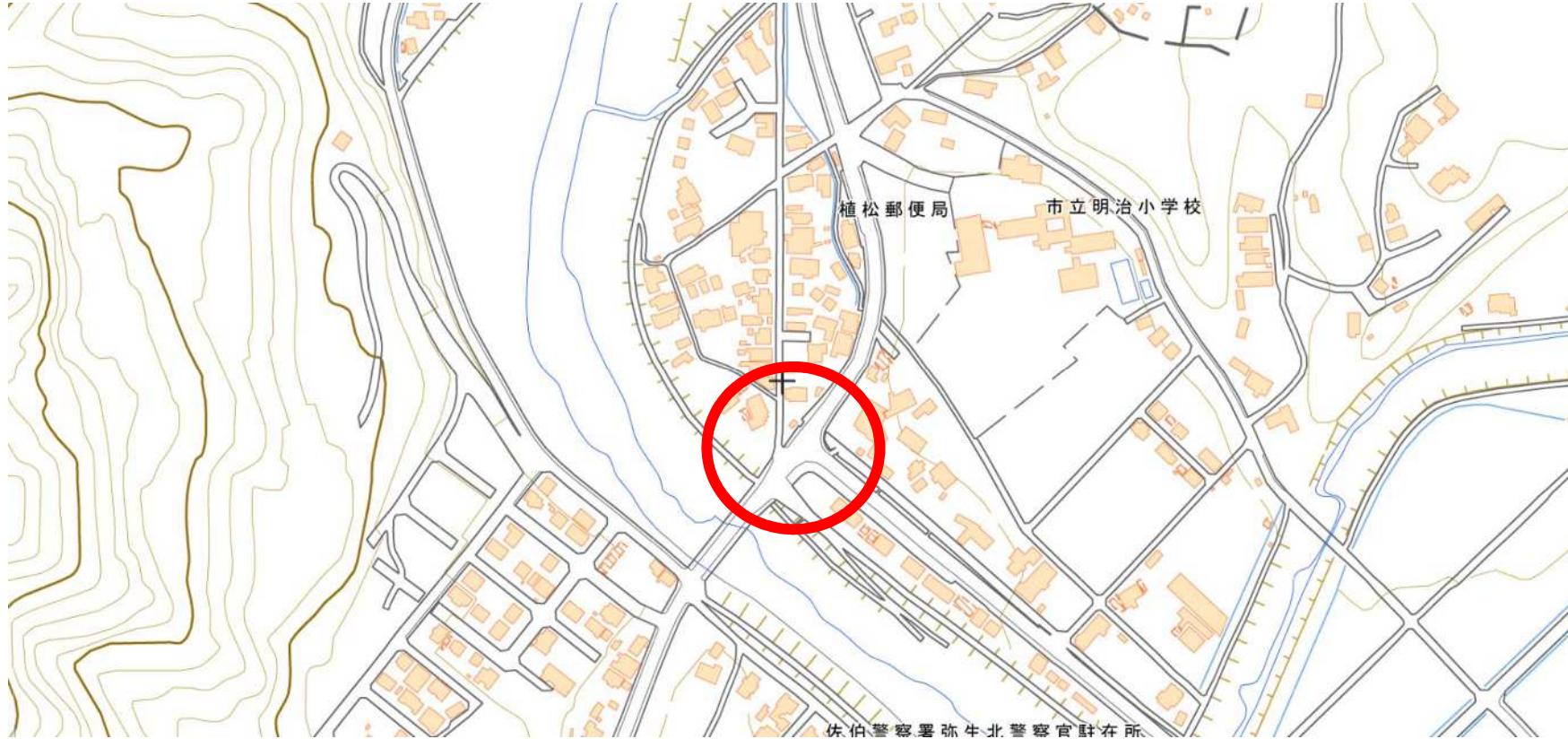


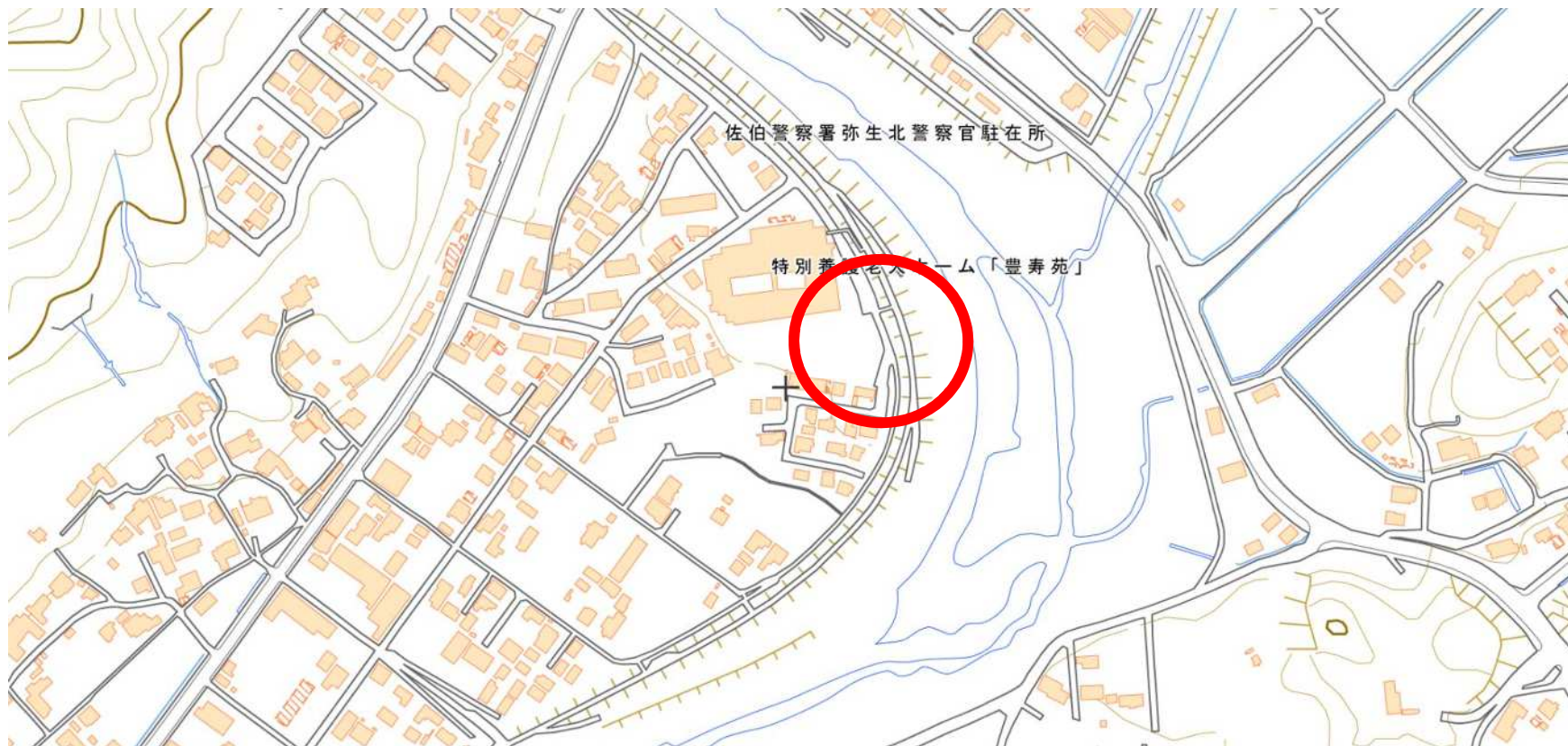


201 東雲小（東雲中）

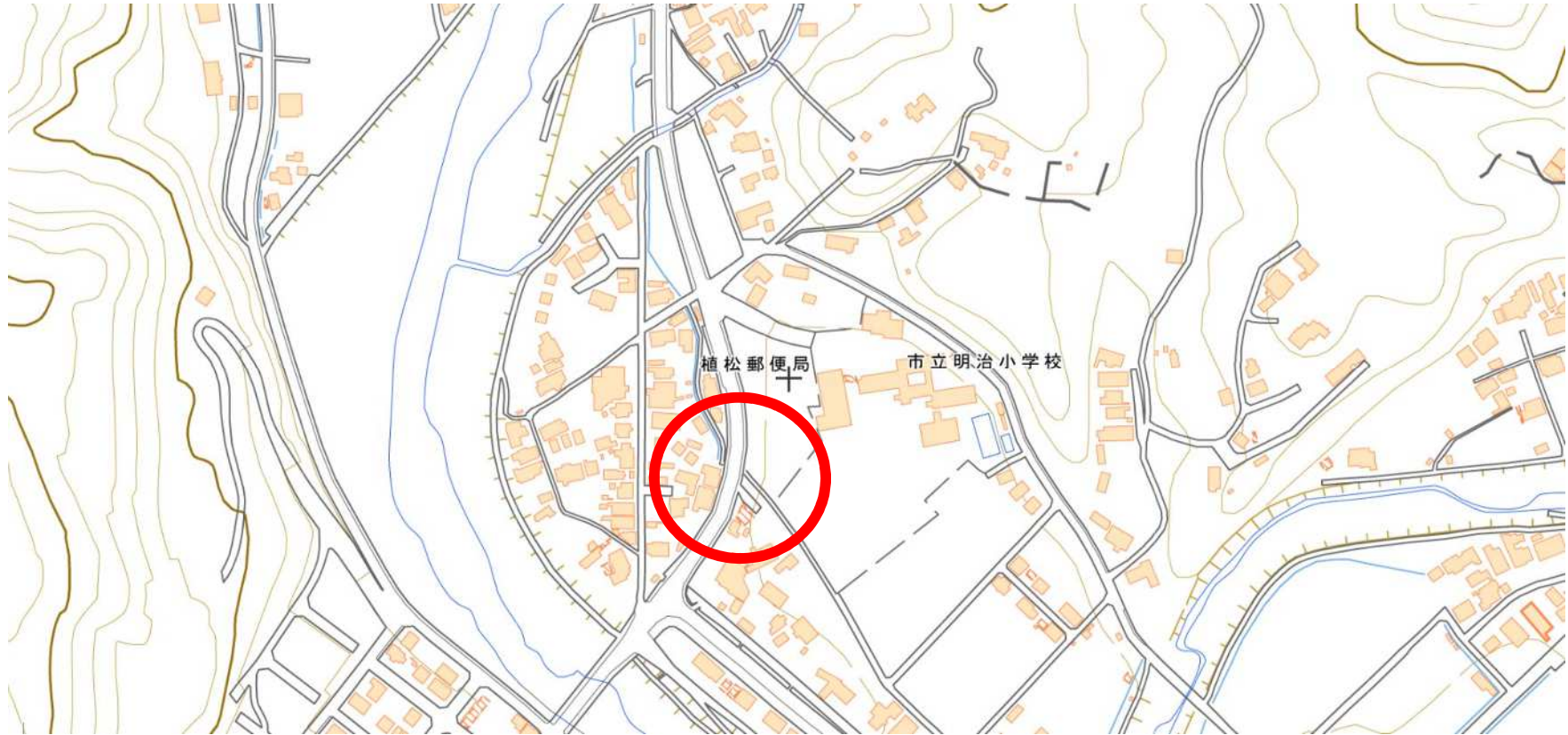


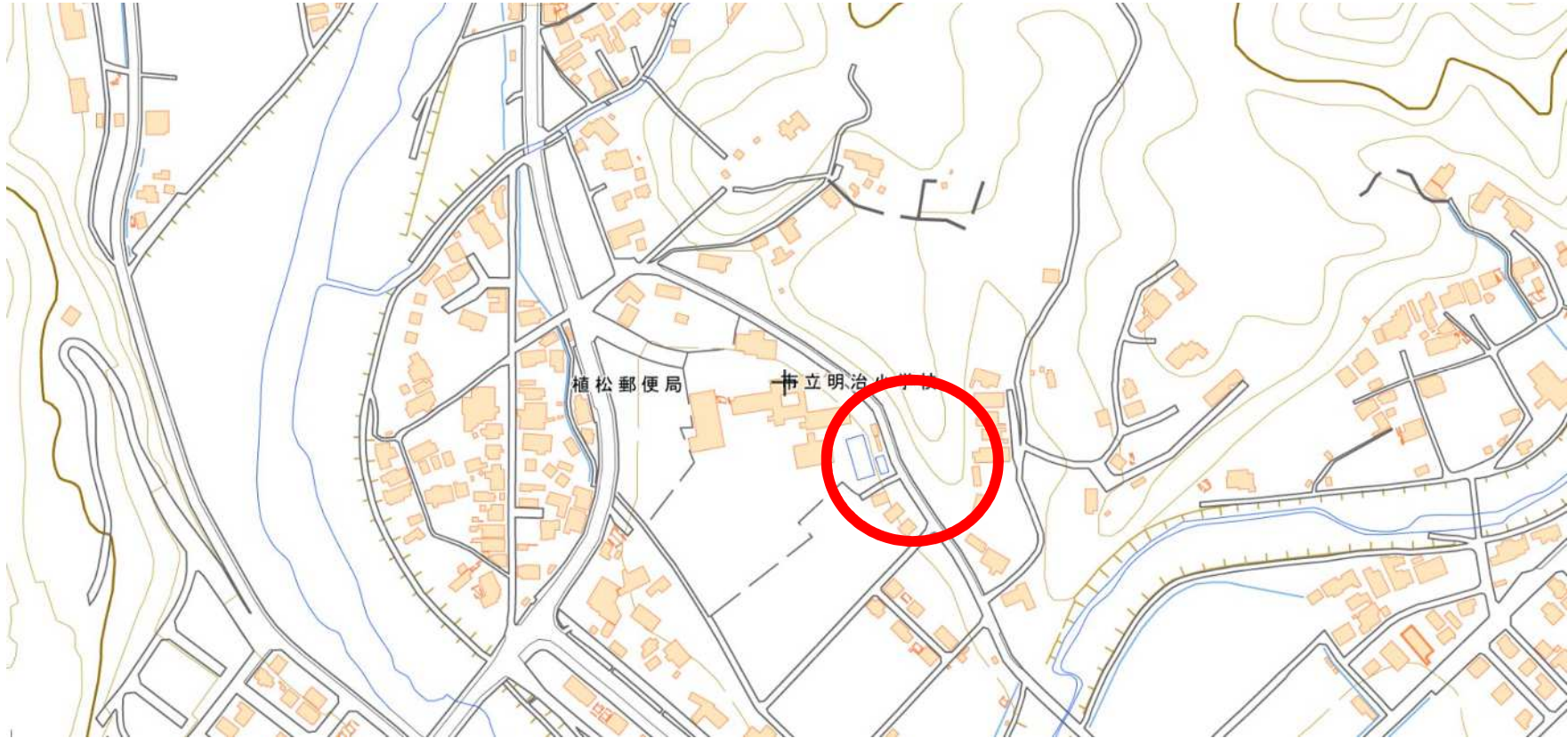


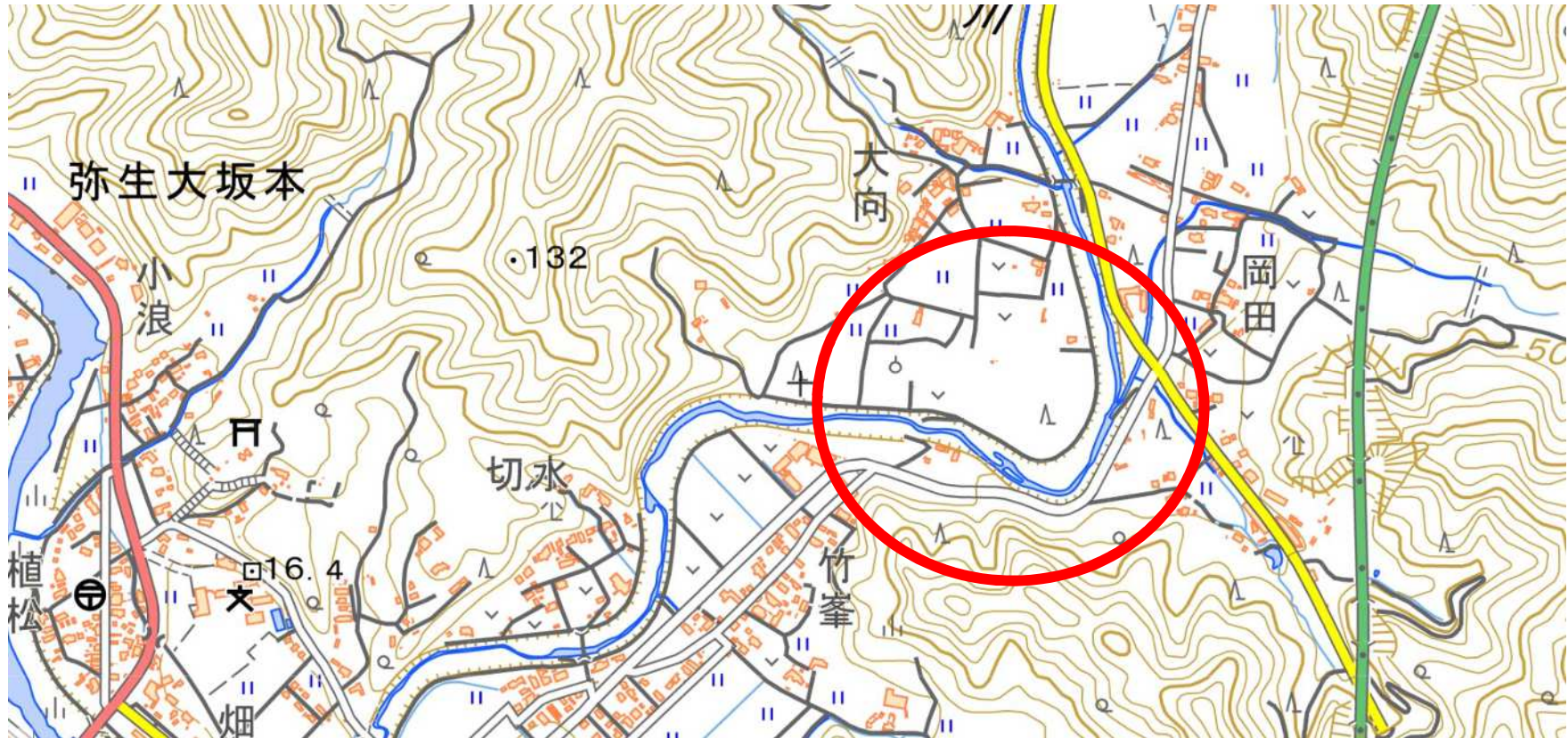


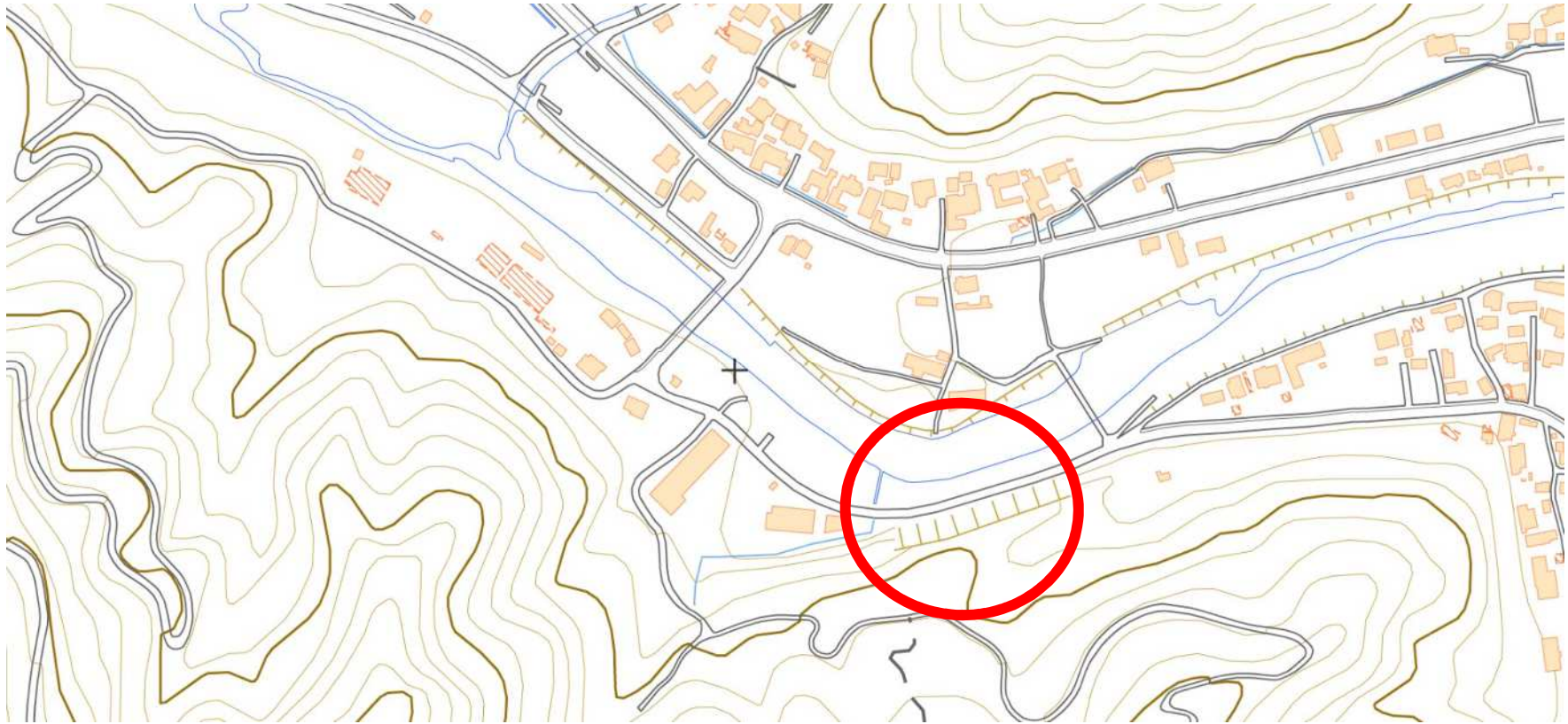




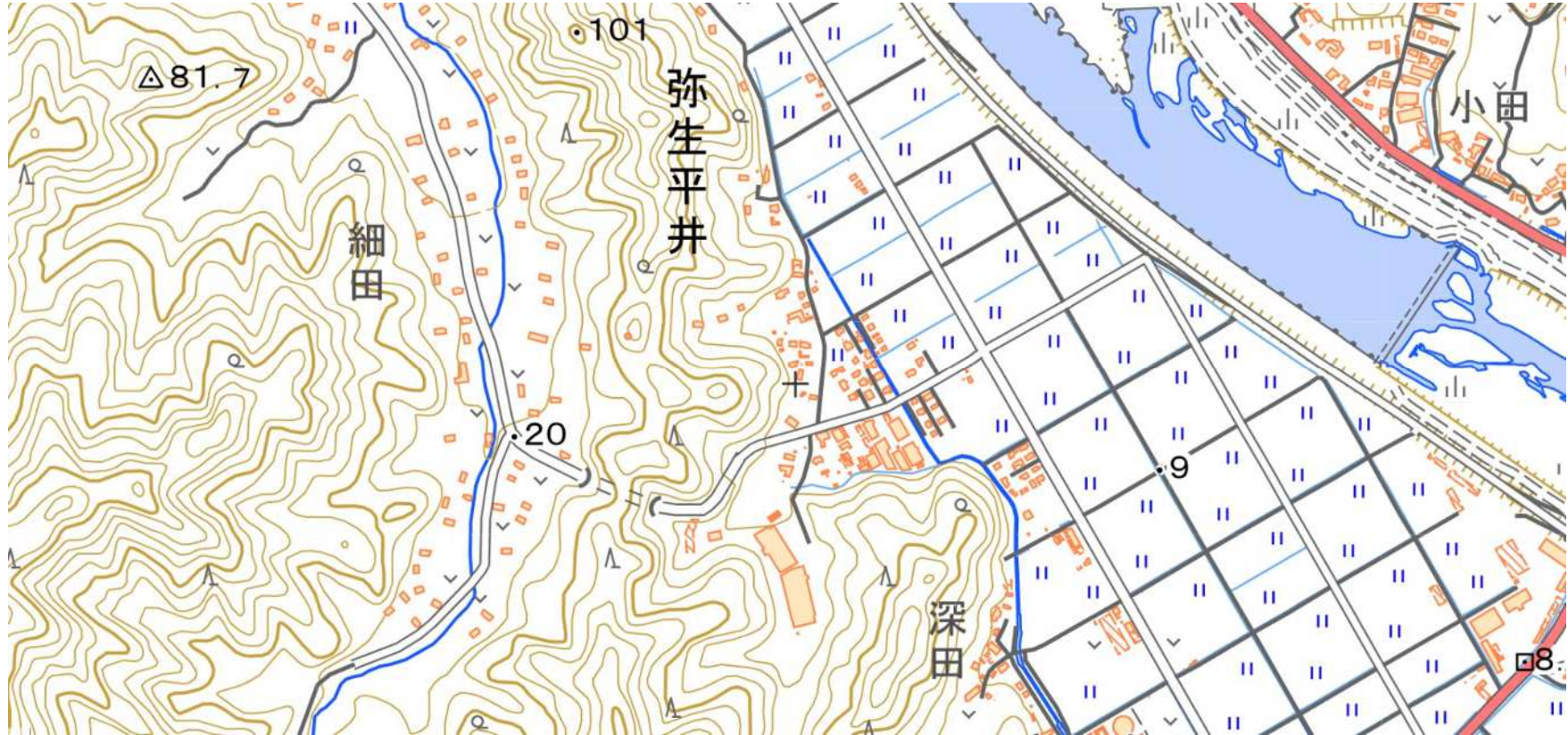














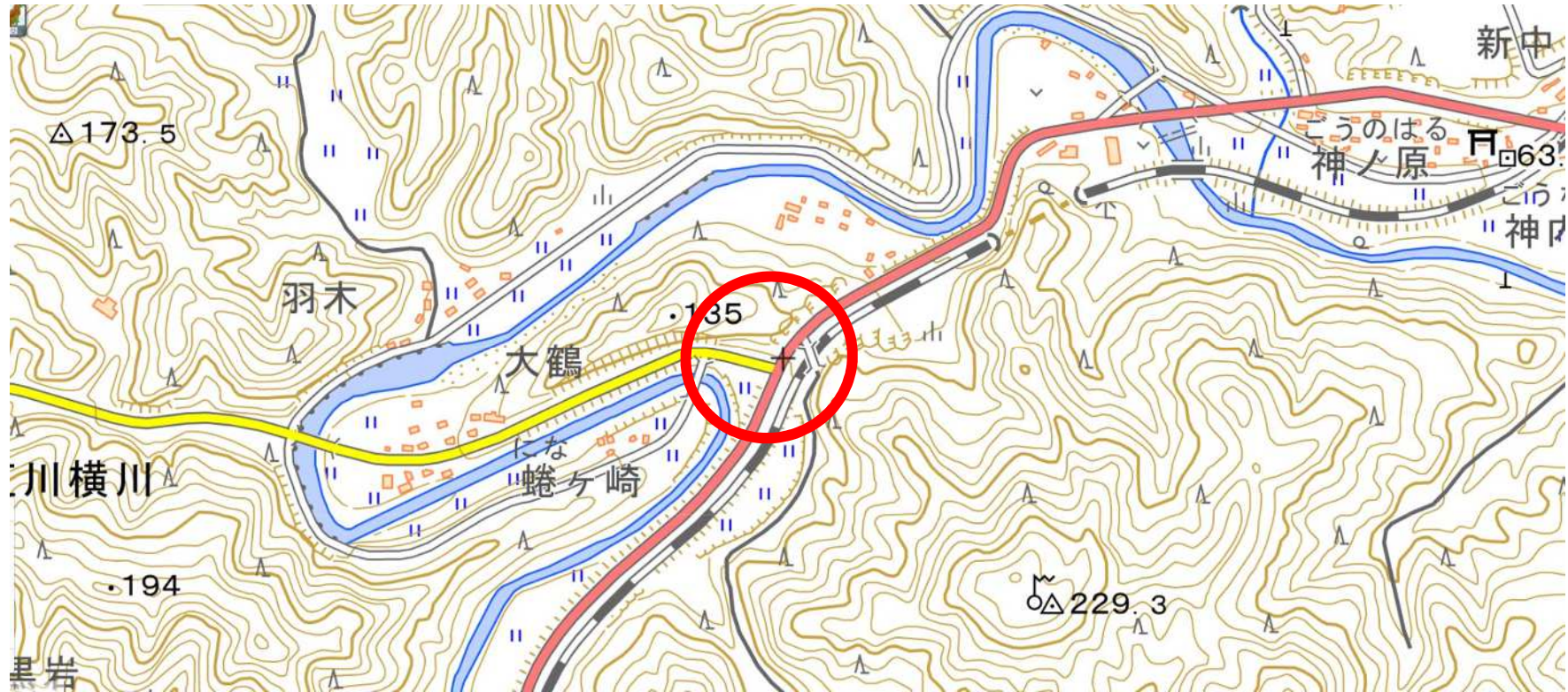
213 宇目緑豊小 (宇目緑豊中) 宇目大字千束



214 直川小（直川中） 直川大字上直見

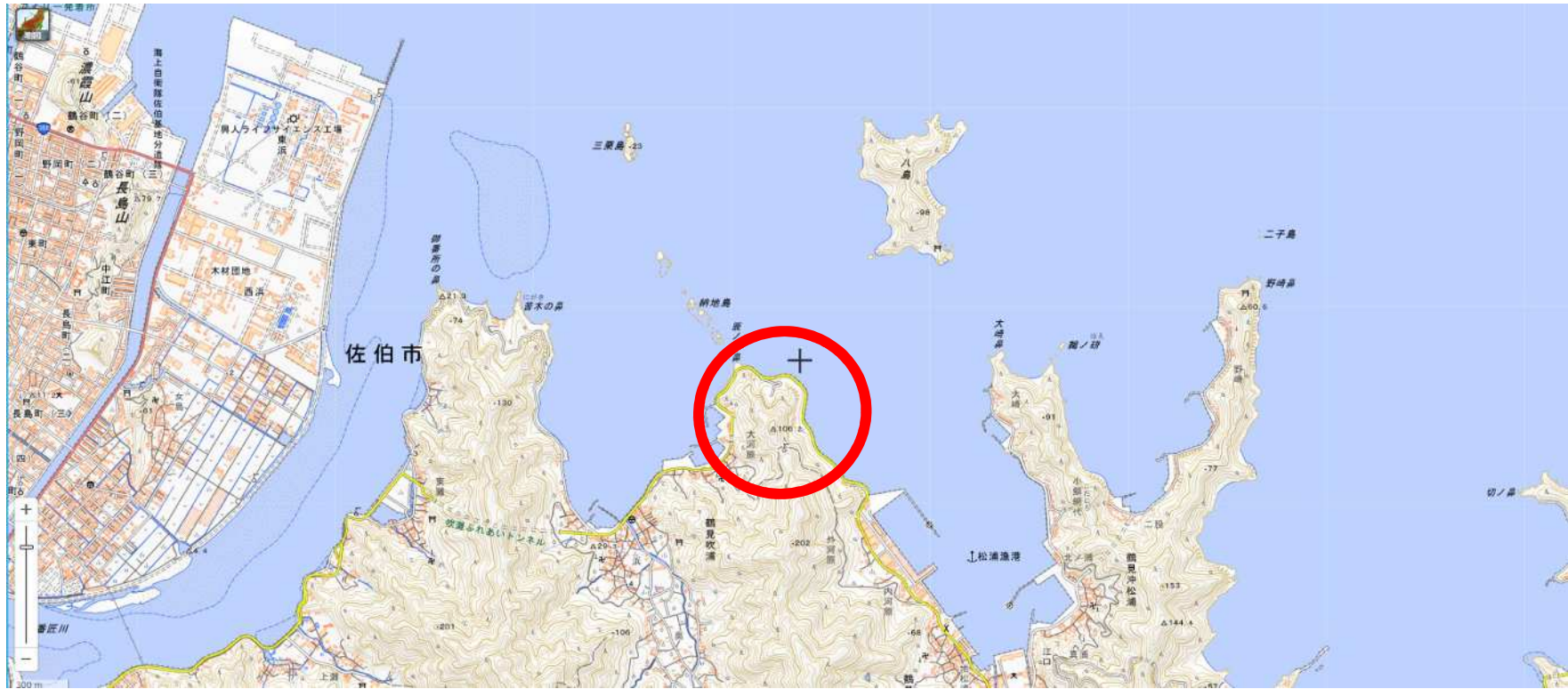


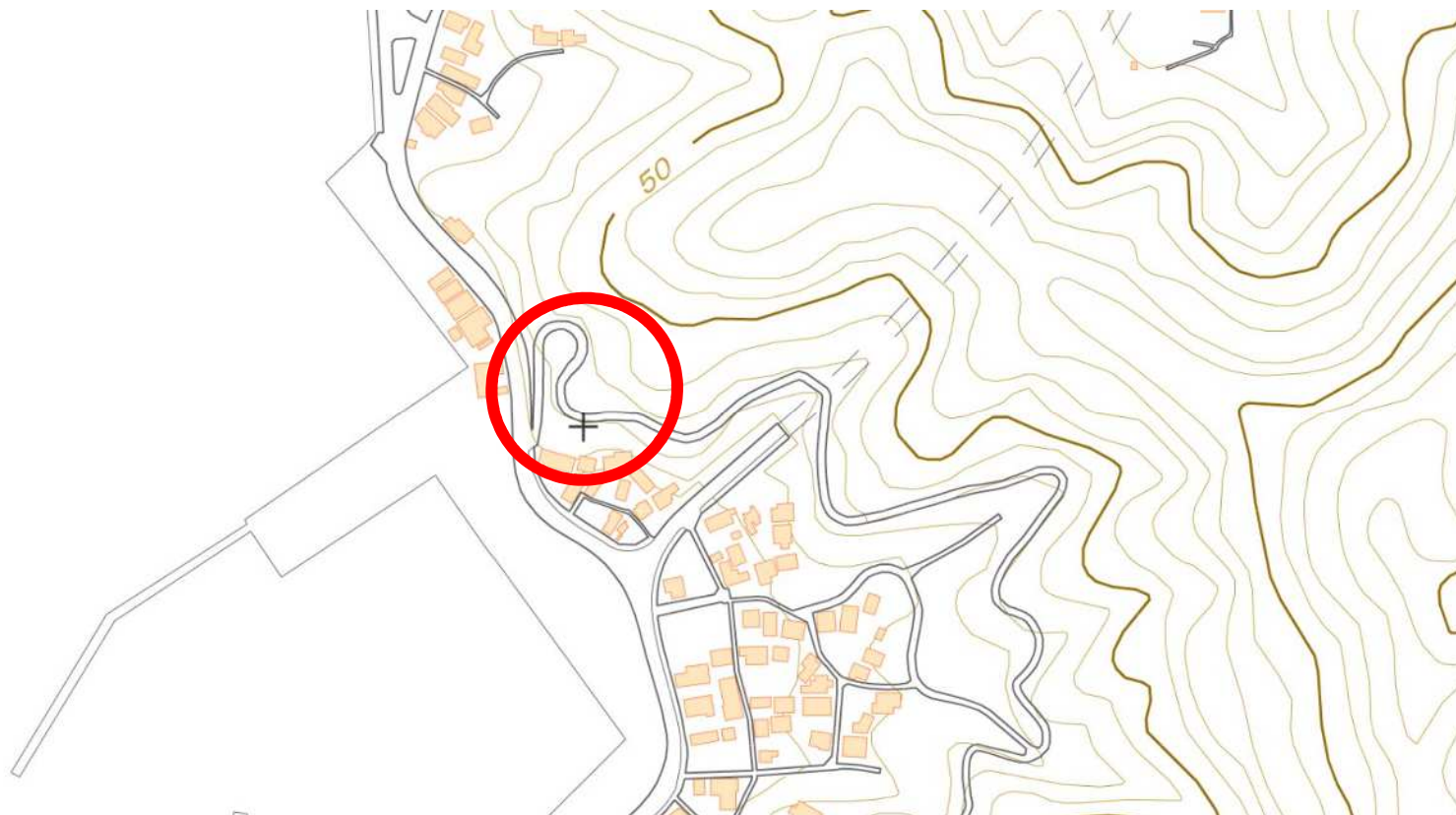
215 直川小（直川中） 直川大字仁田原



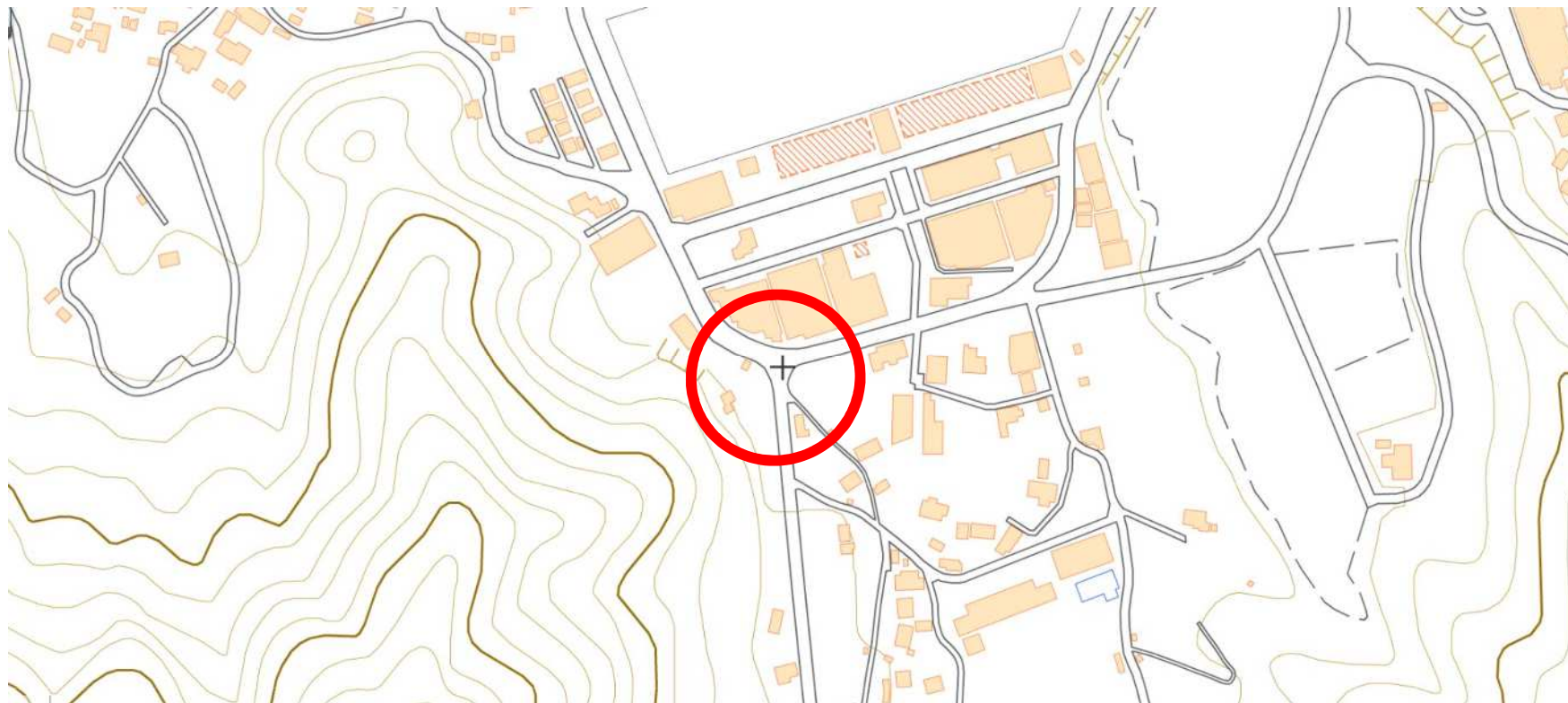


217 松浦小（鶴見中） 鶴見大字吹浦





219 米水津小 米水津大字色利浦





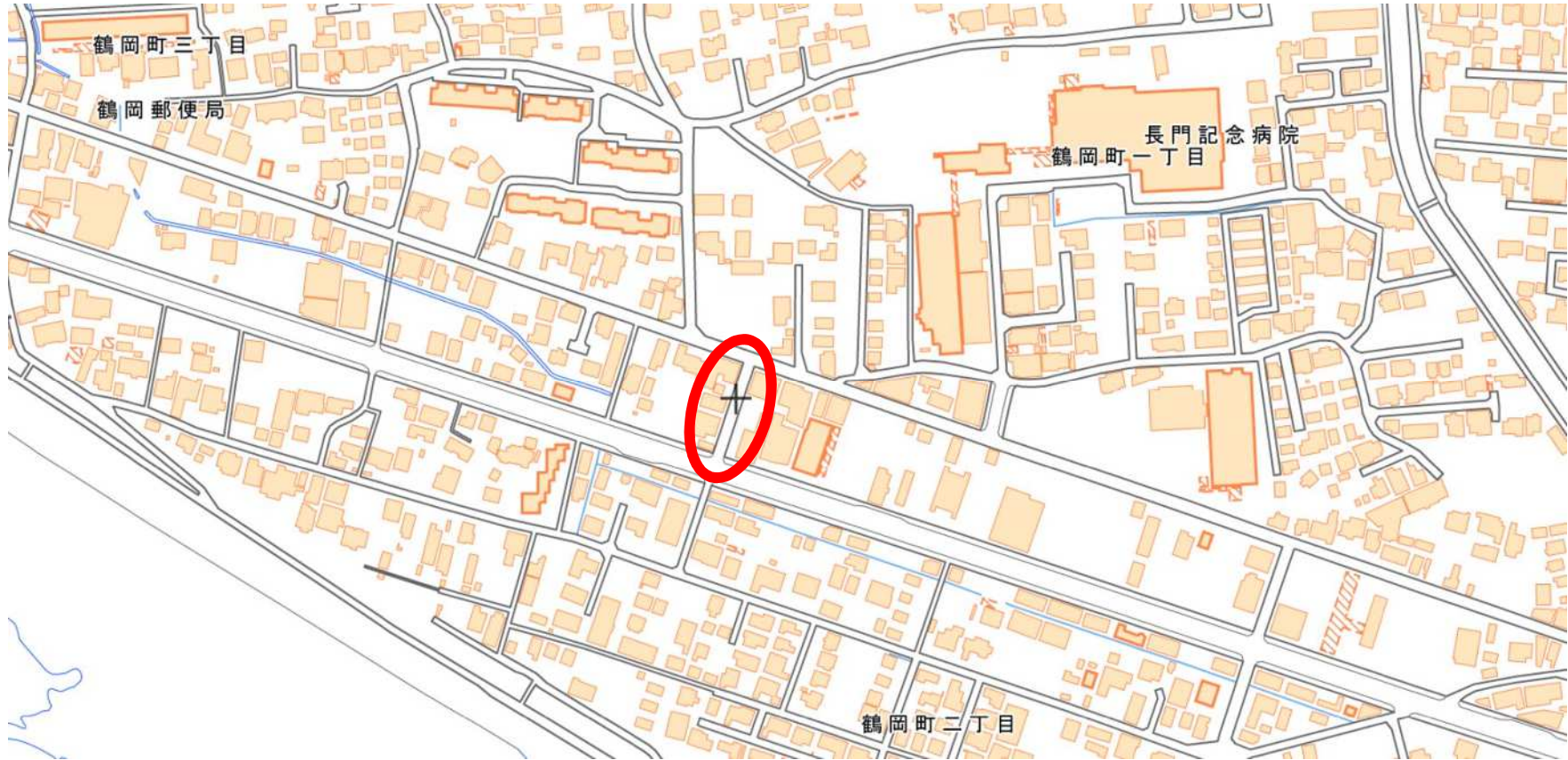


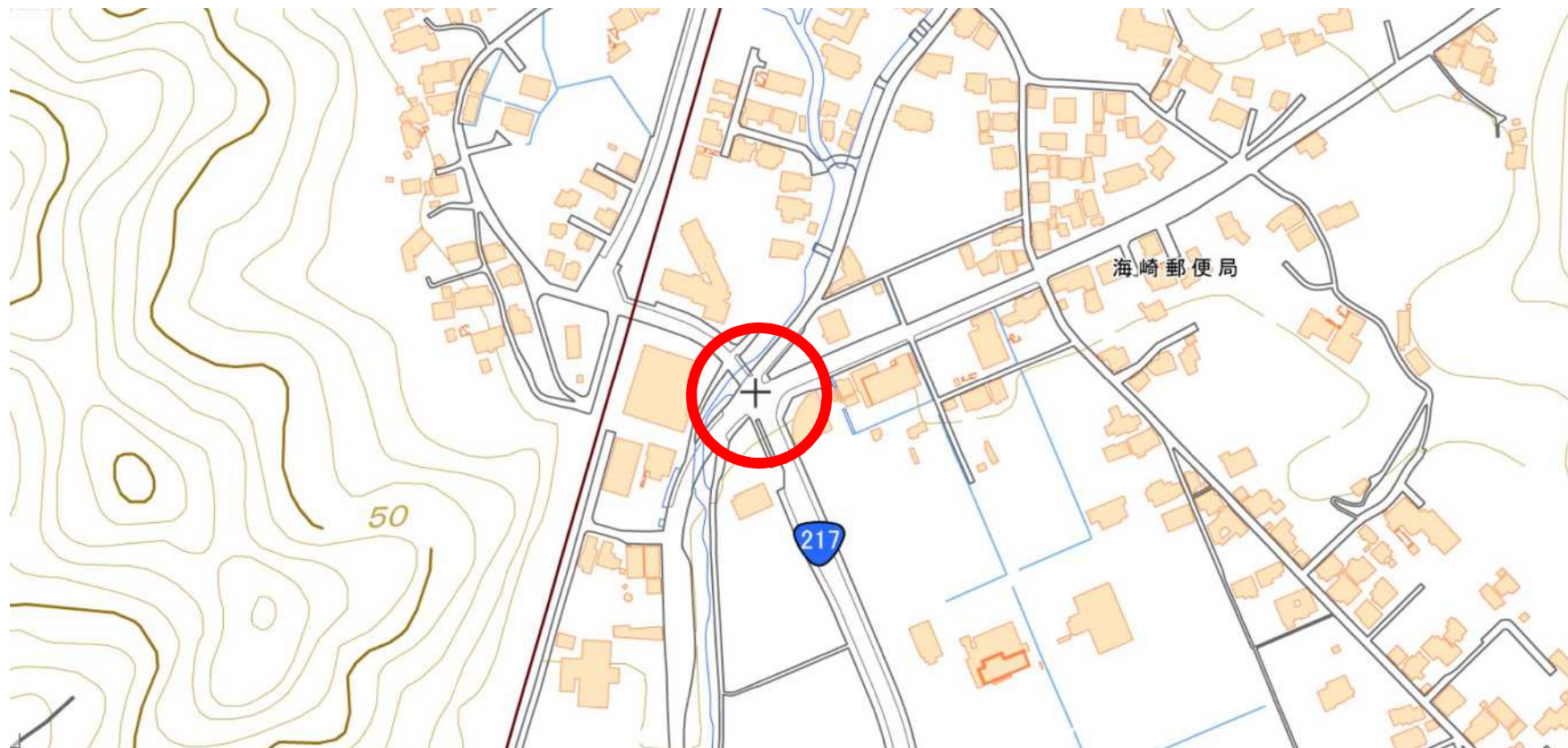


223 蒲江翔南小 蒲江大字蒲江浦

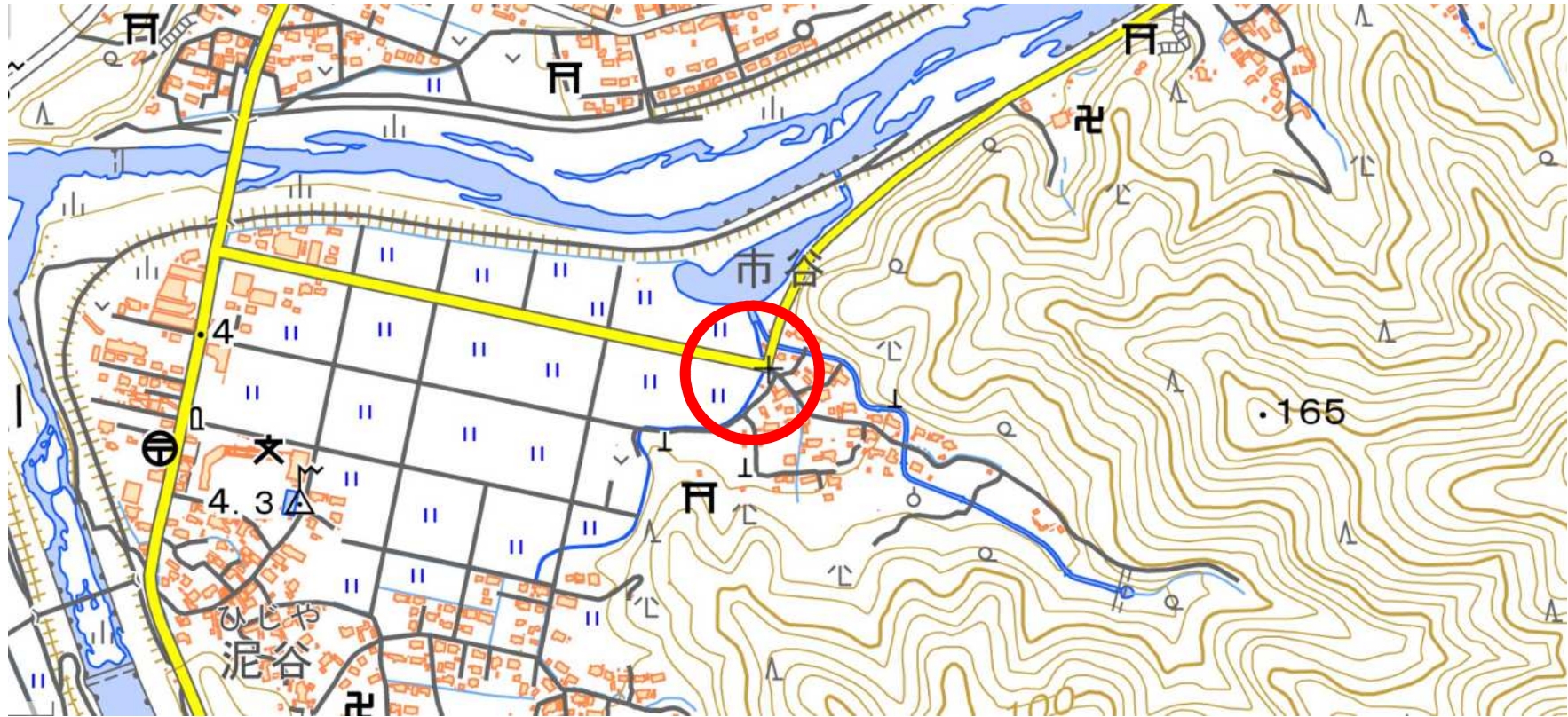


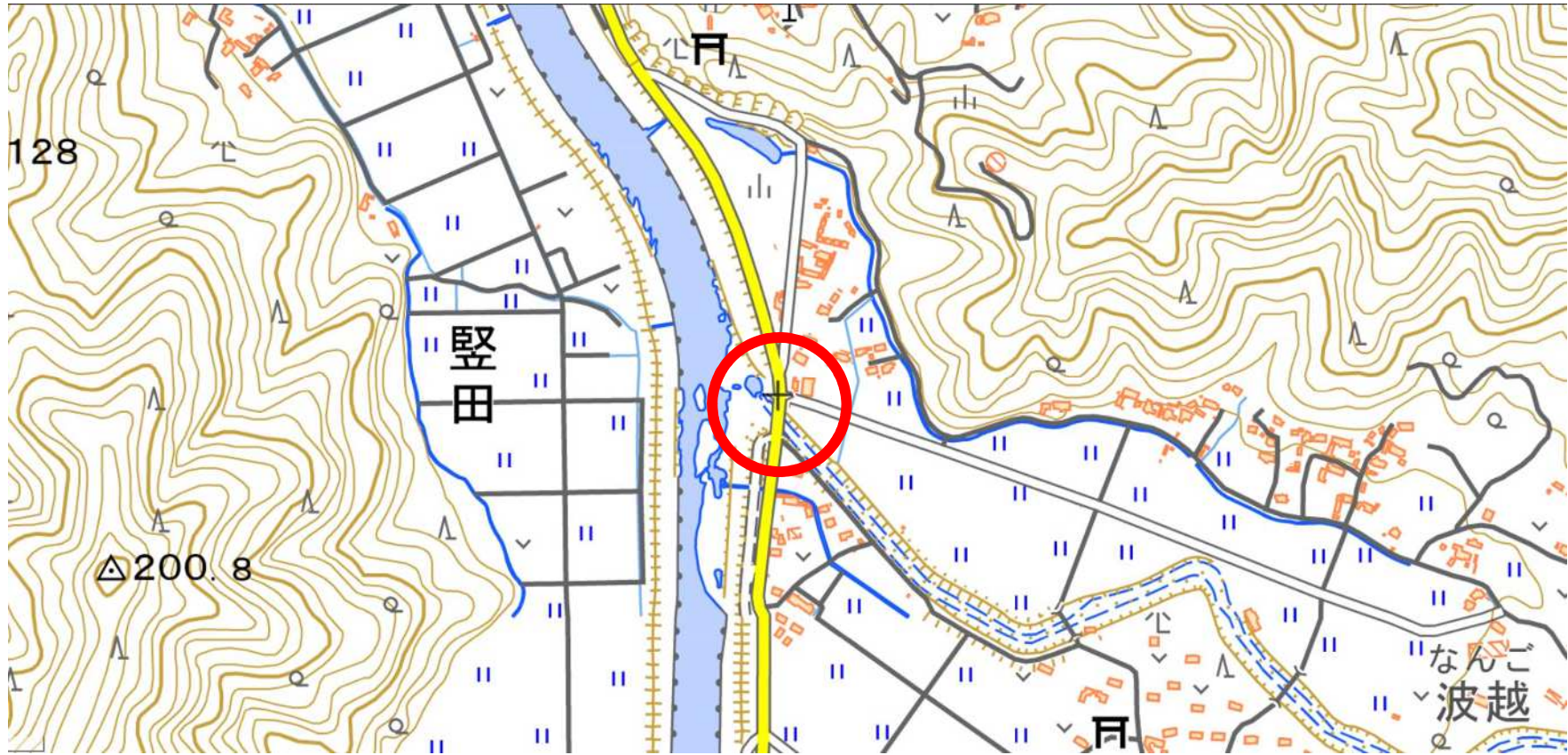




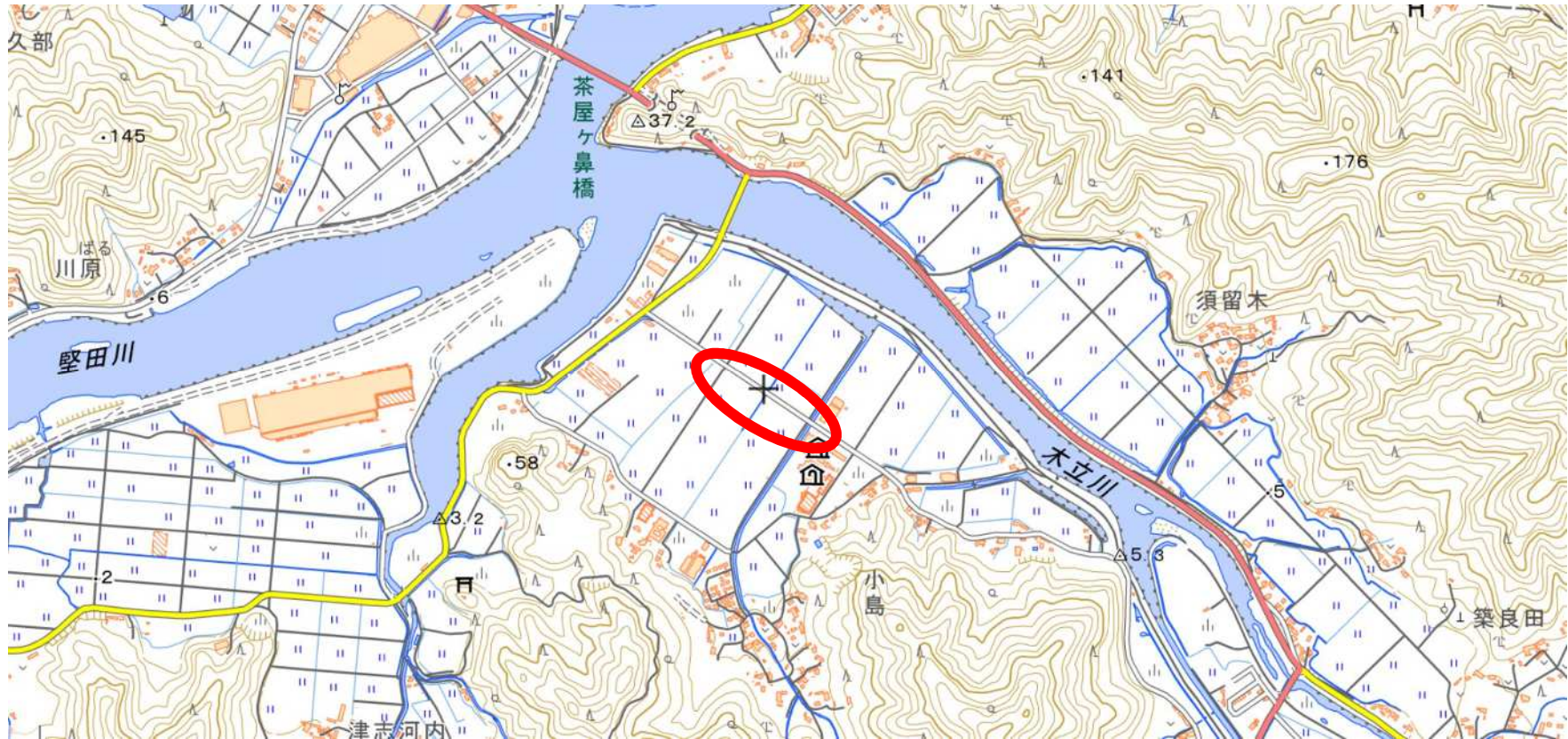


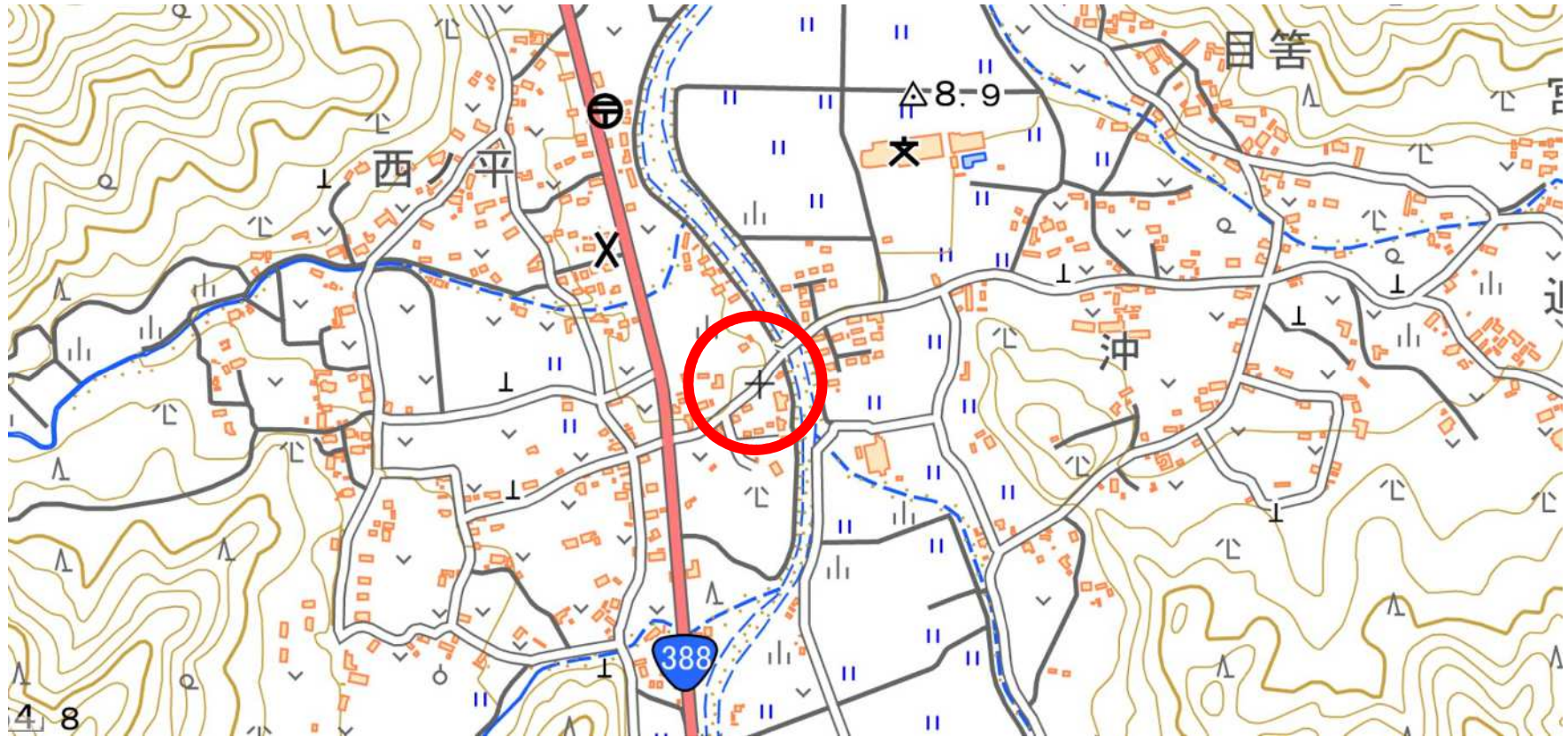


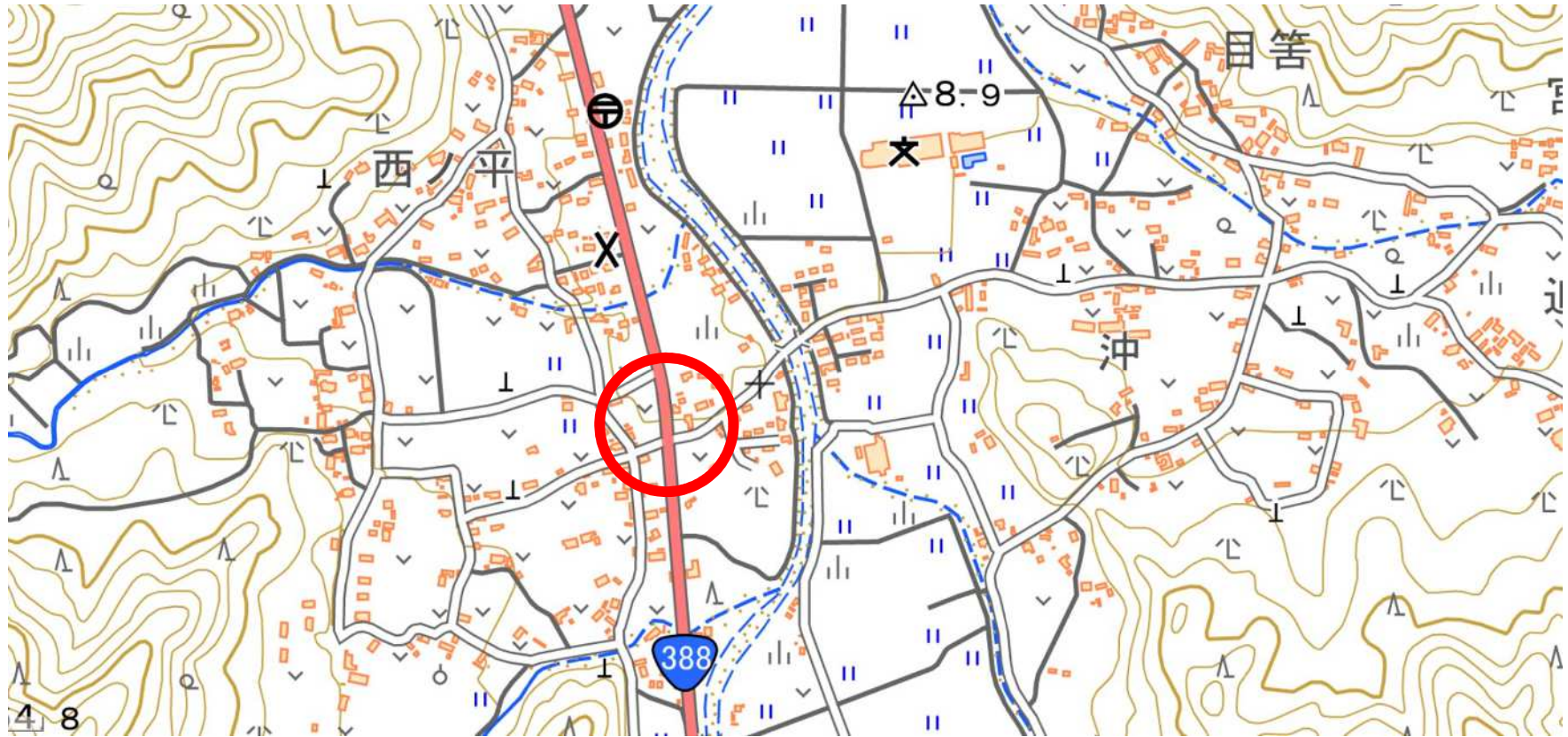




230 下堅田小 大字長良

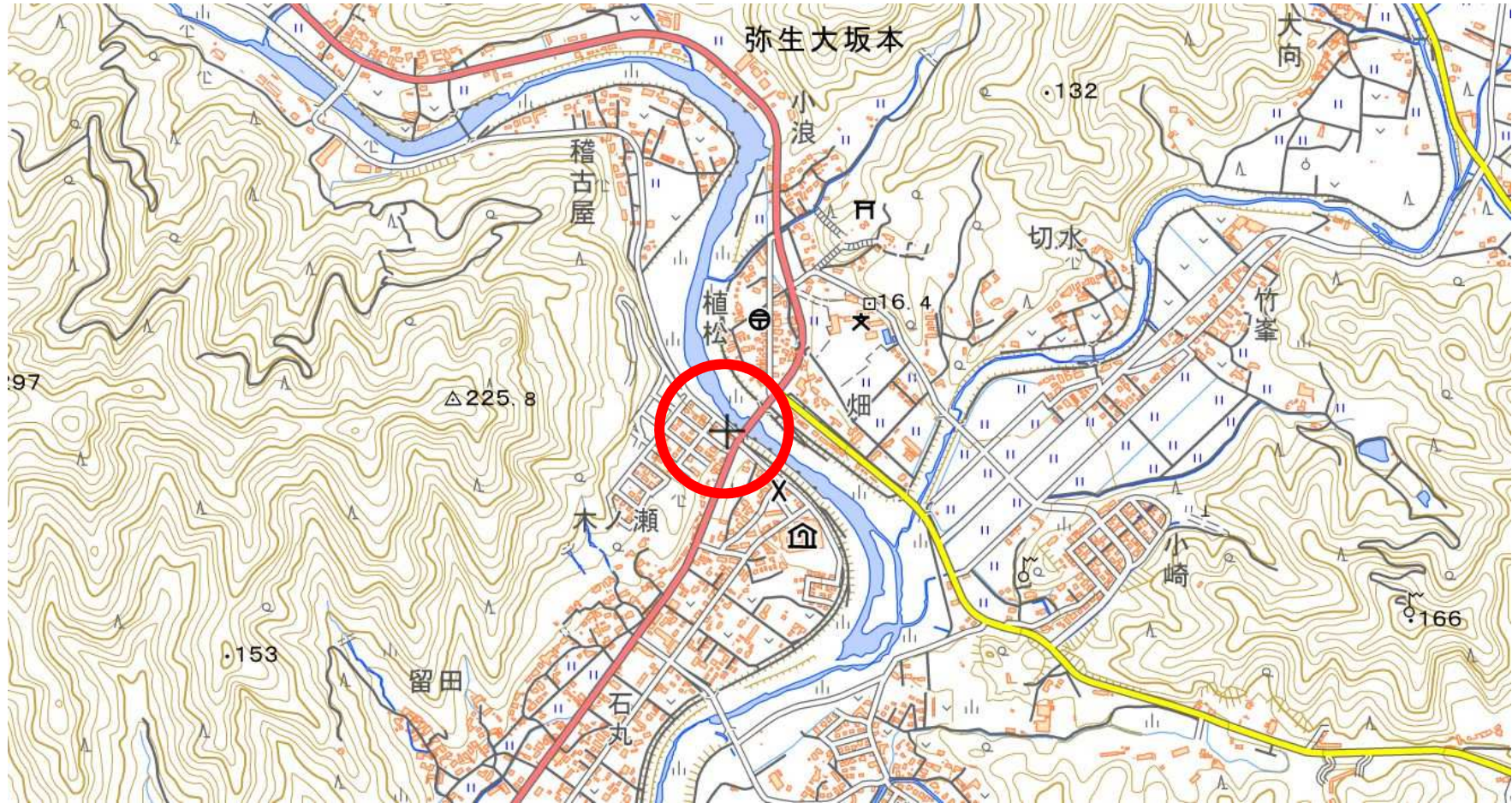


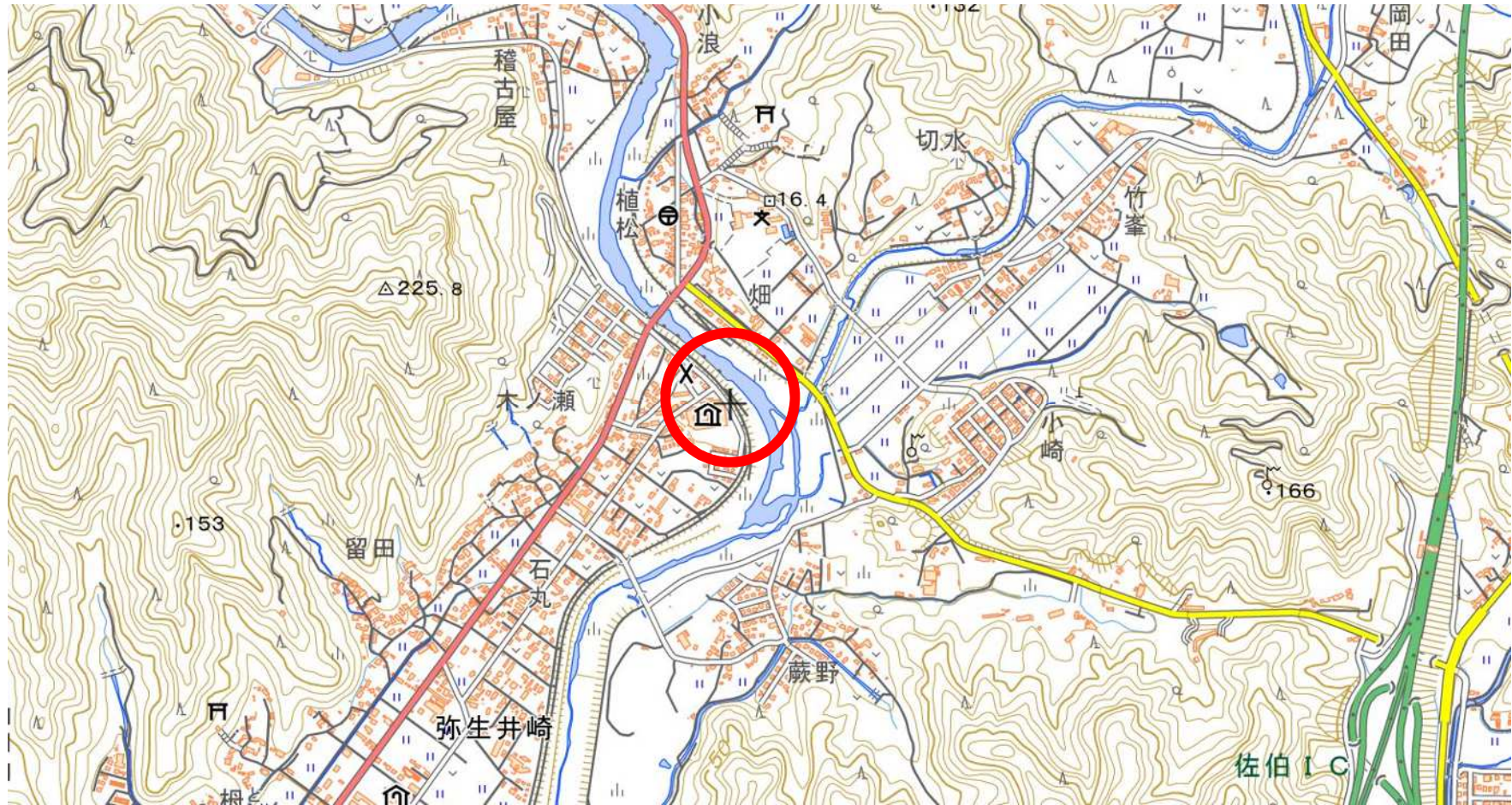




233 東雲小（東雲中） 上浦大字最勝海浦













239 直川小 直川大字下直見



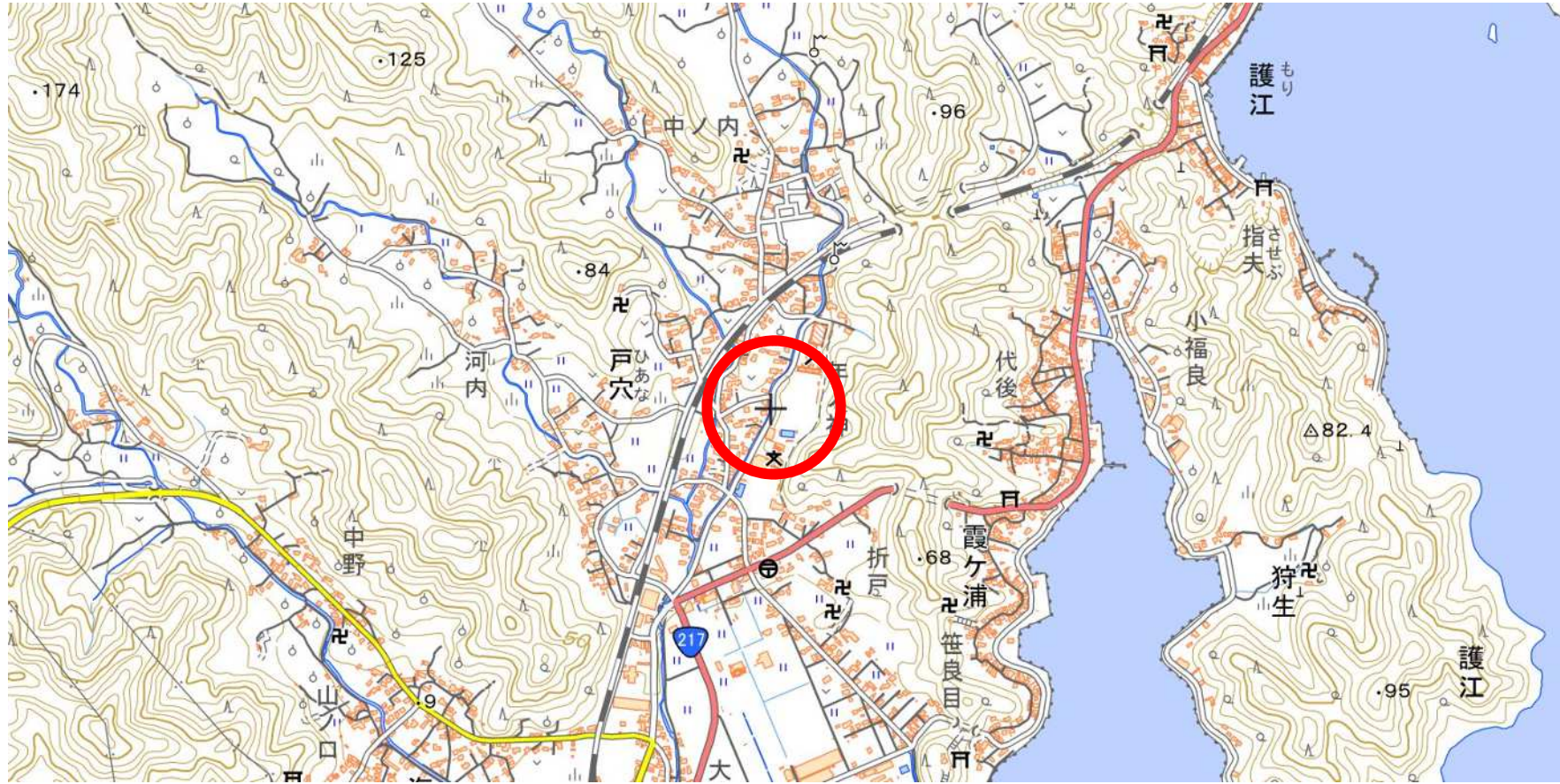


241 蒲江翔南小 蒲江大字蒲江浦



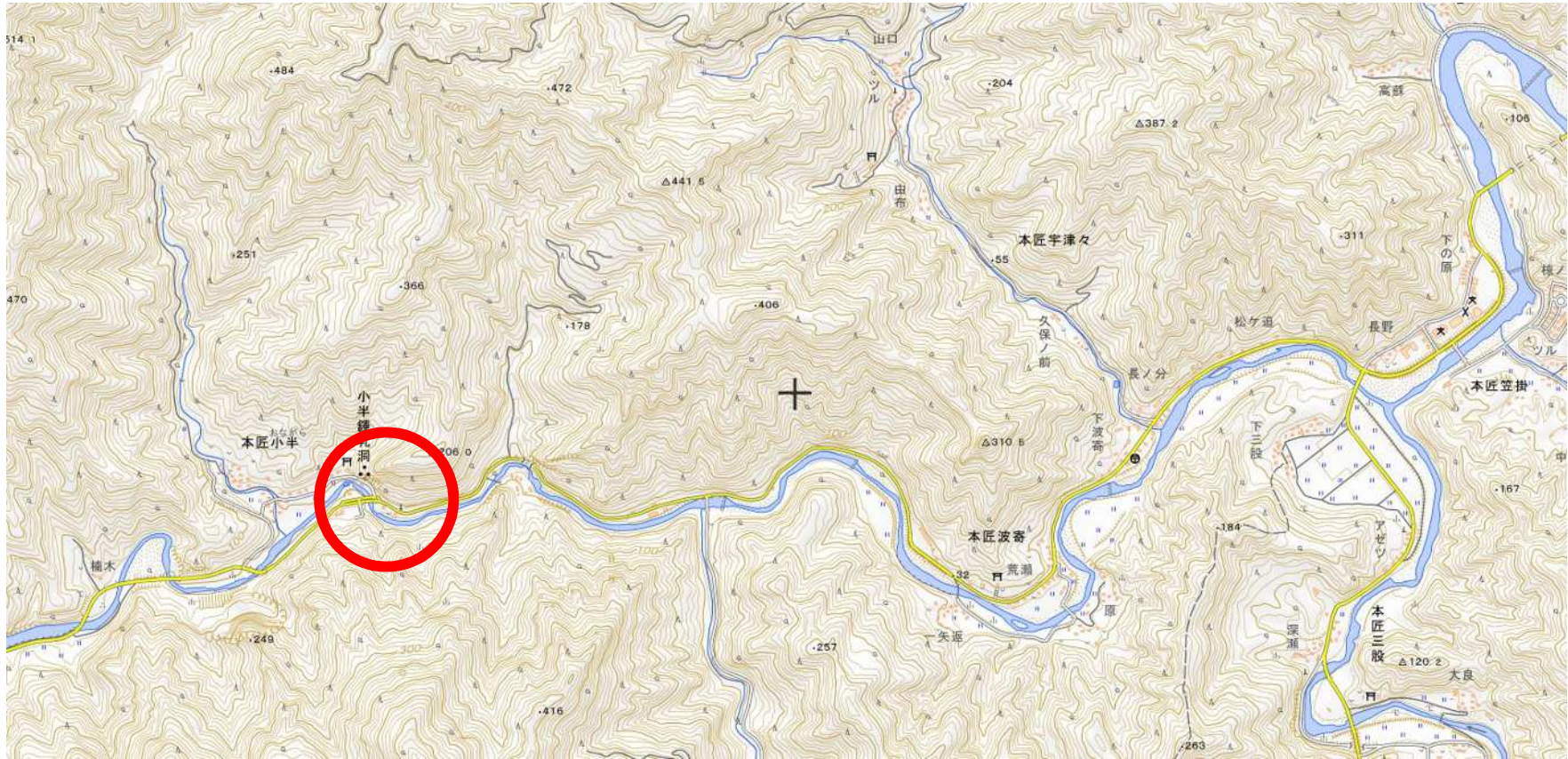


243 八幡小 (彦陽中) 大字戸穴



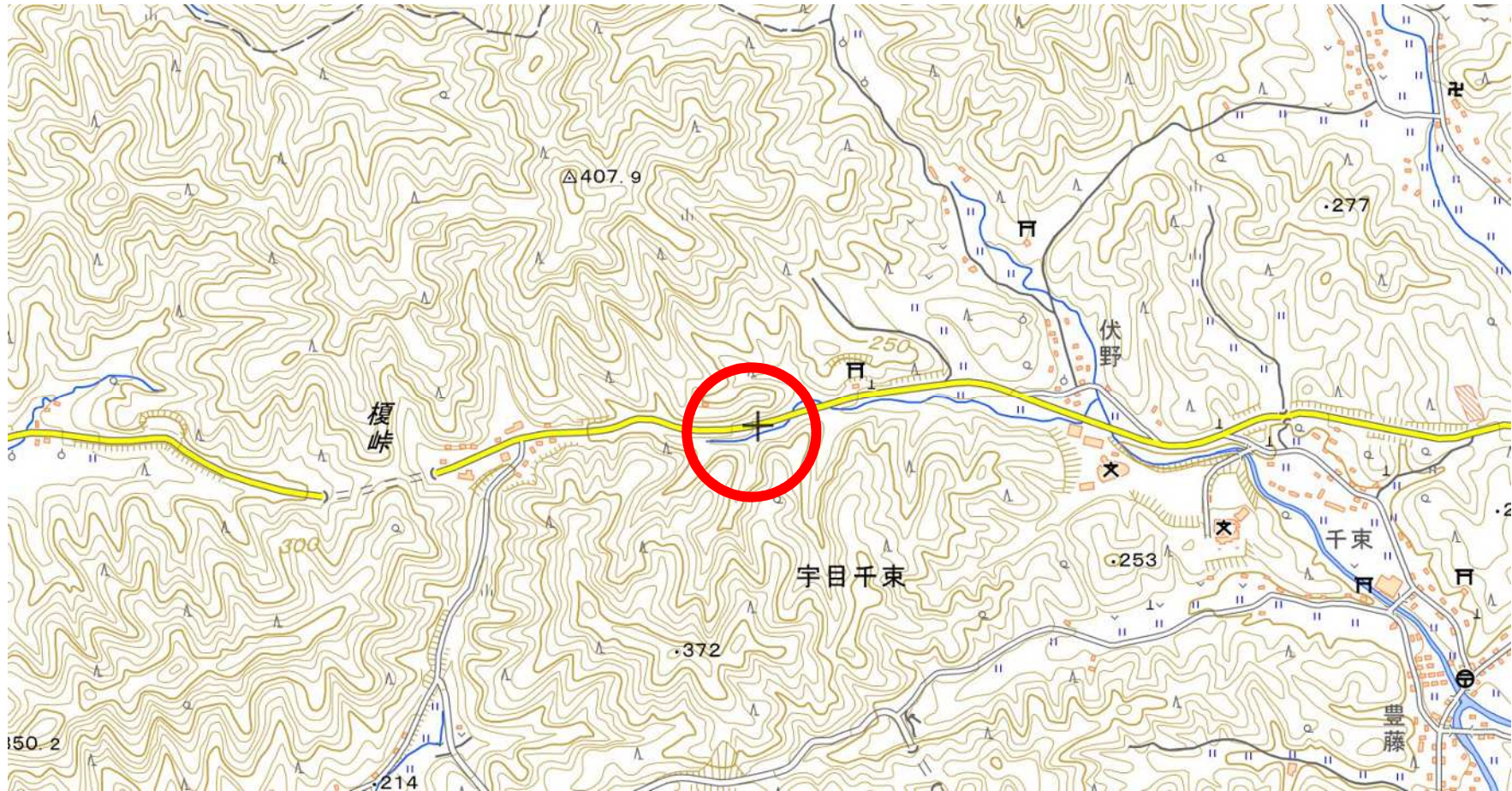


245 本匠中 本匠大字小半

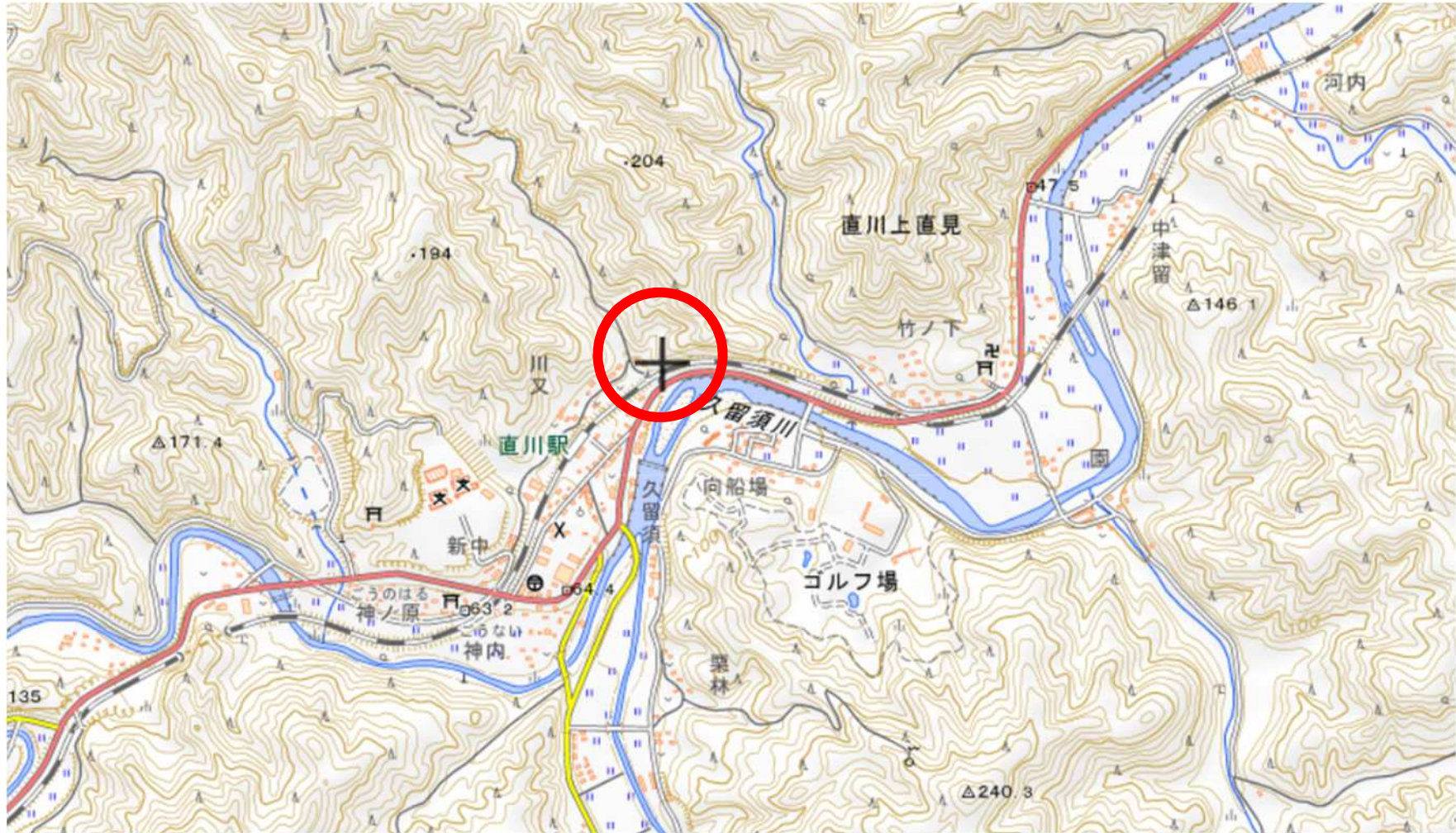




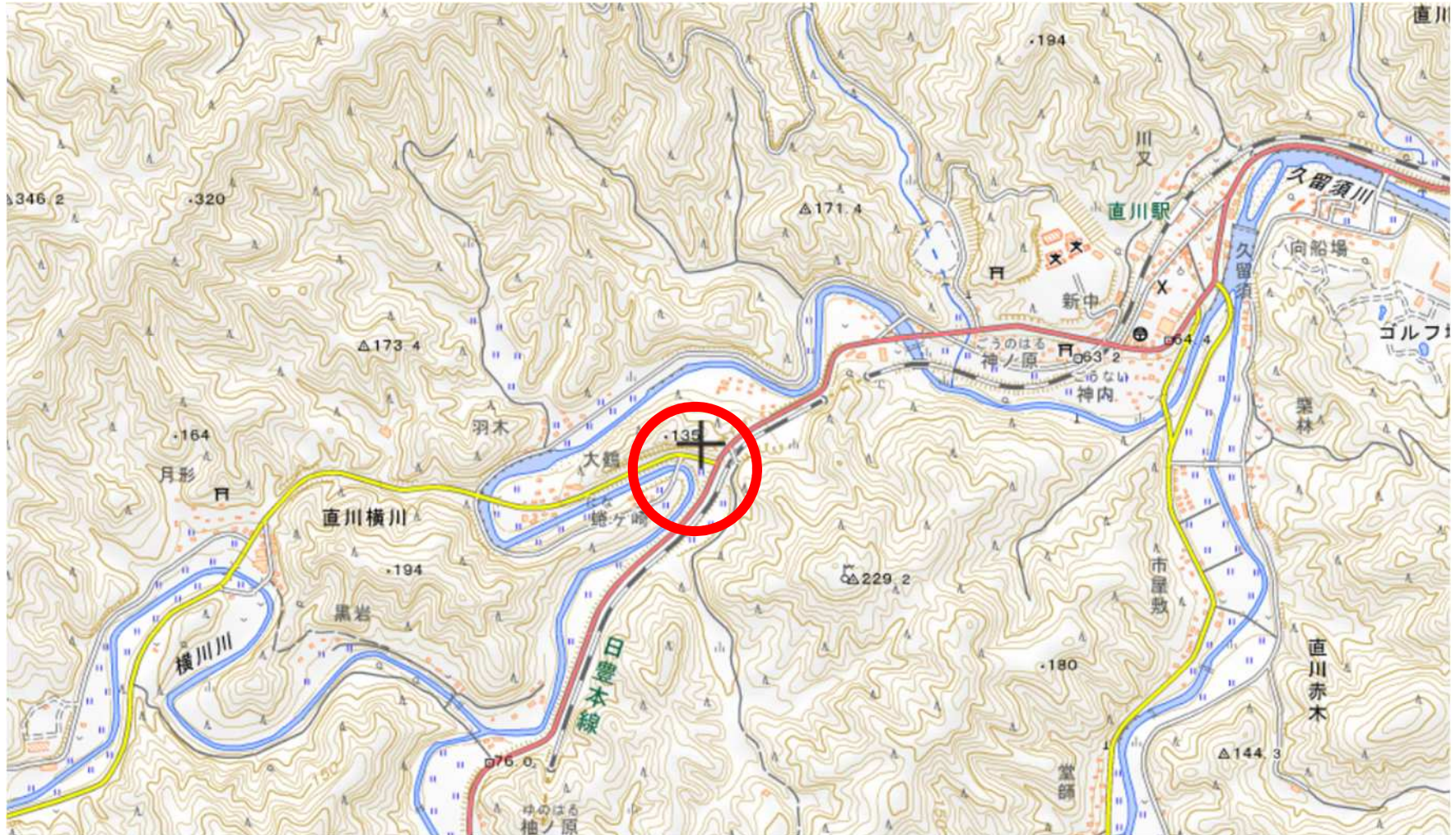
247 宇目緑豊小 (宇目緑豊中) 宇目大字千束



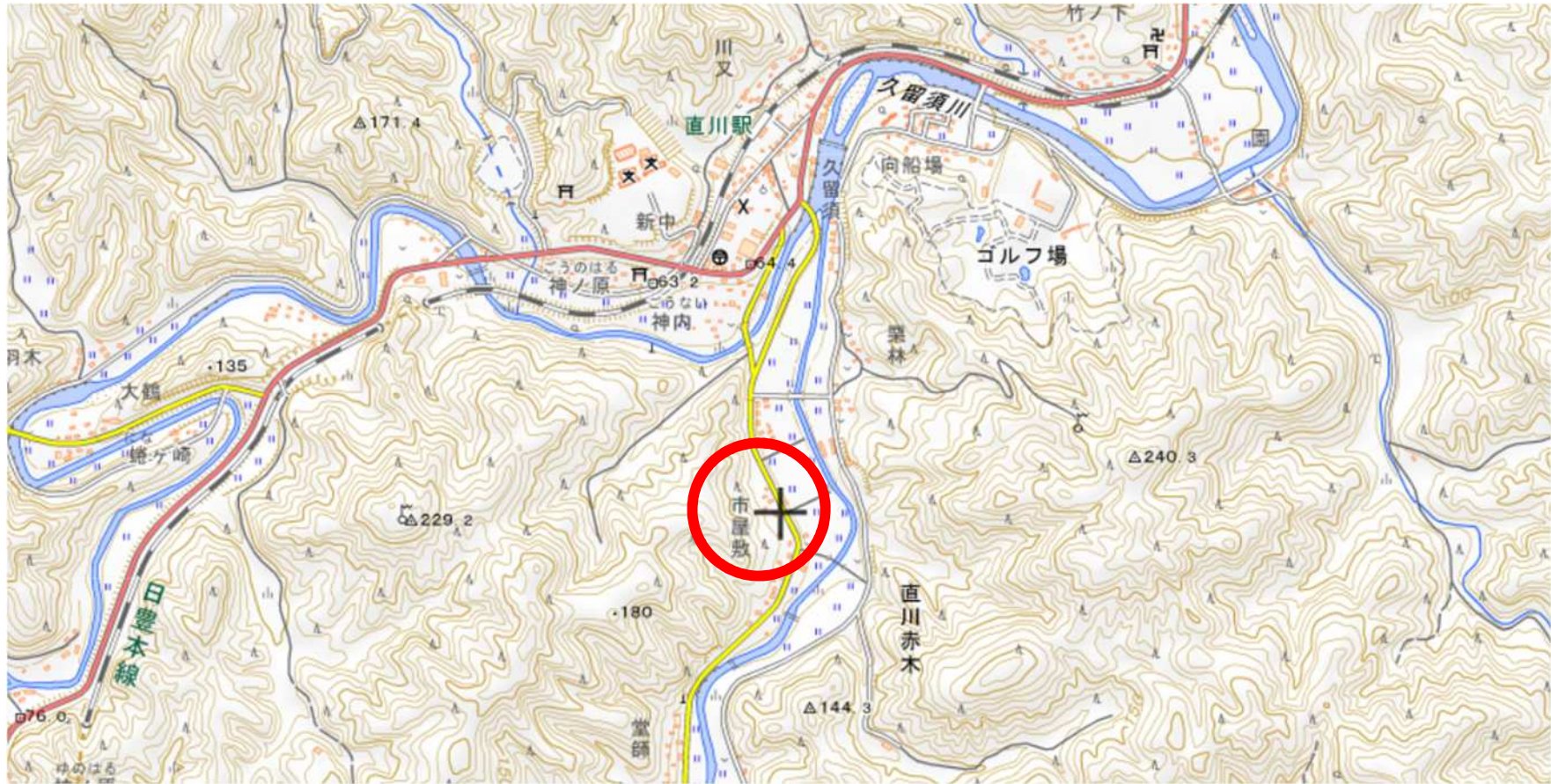
248 直川小（直川中） 直川大字上直見



249 直川小 (直川中) 直川大字仁田原



250 直川小（直川中） 直川大字赤木















257 米水津中 米水津大字色利浦



